

The logo for 'd-unlocker' is rendered in a bold, italicized, black font with a yellow-to-green gradient and a drop shadow. It is positioned on the left side of a horizontal banner that features a green and yellow abstract background with a faint image of a mobile phone.

d-unlocker

User's Guide

Contents

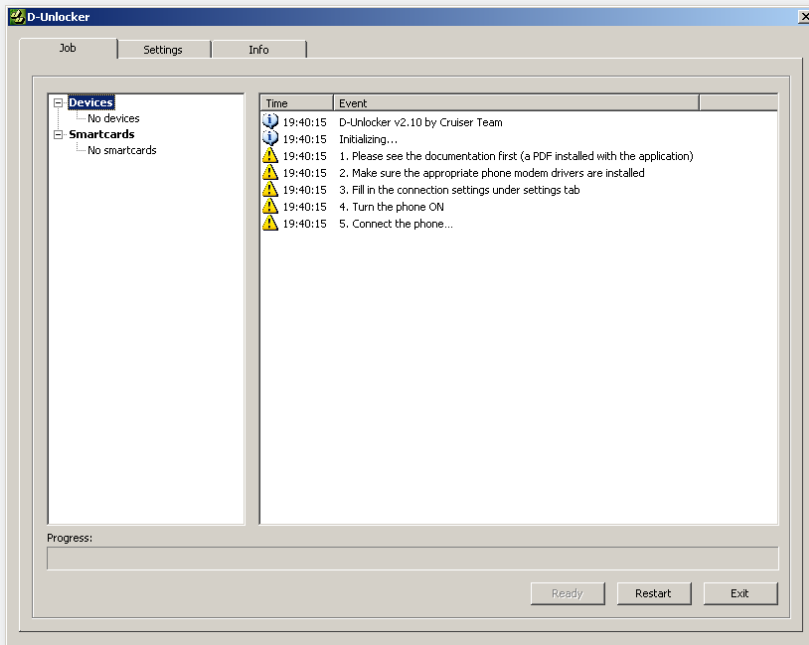
D-Unlocker	3
Installation	4
Before Starting	5
Unlocking Procedure	6
Appendix: Installing drivers in detail (for Windows XP)	8

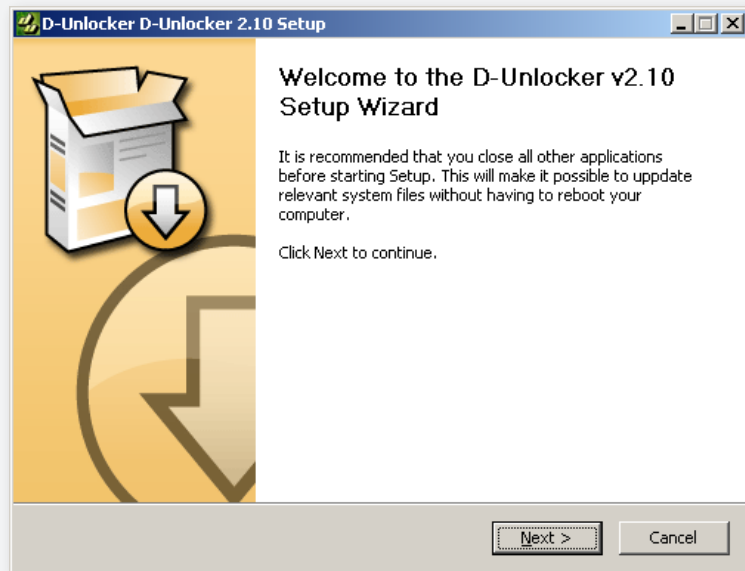
D-Unlocker

D-Unlocker is an application for **full and permanent unlocking** of almost all SonyEricsson phones. D-Unlocker can also fully **repair** a damaged security zone. The phone must be previously flashed with a correct firmware.

Currently supported platforms:

- PDA DB2000
- PDA DB2001
- DB2012
- DB2020
- DB3150
- PNX5230





Installation

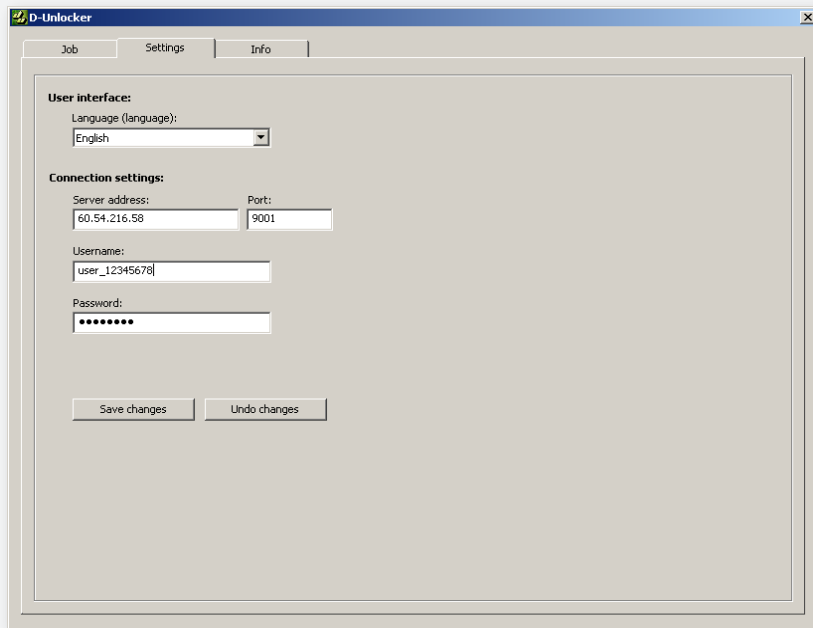
1. Run installer `D-Unlocker_v2.10-installer.exe`
2. Follow the installation wizard's instructions.

Installation successful.

Before Starting

1. If you do not have a **D-Client account**, ask your reseller* to create one.
2. Purchase some "**Supreme credits**" from your reseller*.
3. Install USB Flash drivers from
C:\Program Files\D-Unlocker\Drivers\USB Flash
(see **Appendix** for details).

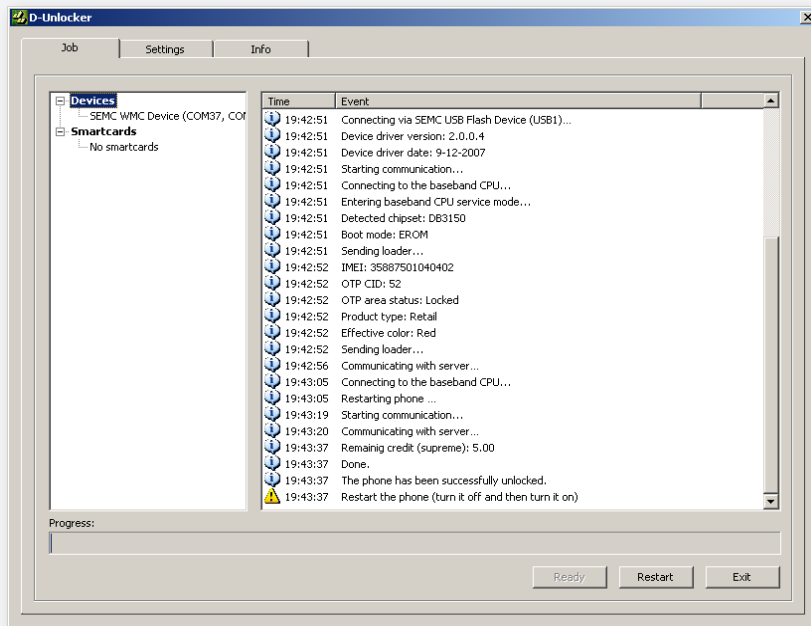
* To find a reseller, visit:
http://www.cruisersuite.com/default.aspx?cms.page=buy_csca_credits



Unlocking Procedure

1. Install phone modem drives corresponding to the specific phone. It can be downloaded from cruiser suite support area <http://www.cruisersuite.com/default.aspx?cms.page=downloads> in section **Software_GSM -> D-Unlocker -> ModemDrivers** (see [Appendix](#) for details).
2. Run D-Unlocker .exe
3. Click the **Settings** tab, and fill in the connection data there:
 - Server data:**
 - IP address/host name (currently 60.54.216.58)
 - port (currently 9001)
 - Your account data** (which you obtained from your reseller):
 - user name
 - password
4. Click the **Job** tab, and start the unlock procedure:
 - 4.a in **User mode** (recommended for unlocking a working phone):
 - power on the phone
 - connect the cable without holding any button





4.b in **Repair mode** (recommended only if GDFS security zone is damaged):

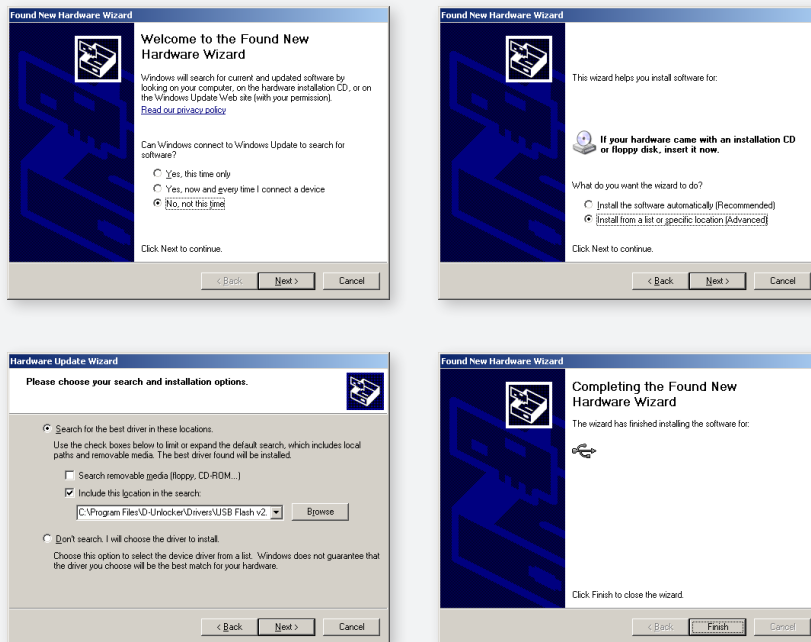
- remove/install battery on the phone
- connect the phone while holding 'C' button
- **Important:** when the phone restarts and powers on, it's required to reconnect the cable

5. Sometimes there might be a lack of server resources, so your operation can be scheduled to specific time and the application asks you to wait. If the period is too long to wait, you can close the application and disconnect the cable and the battery from the phone, and start the procedure again after the wait period elapses.

6. Please wait until the unlock procedure finishes.

Unlocking successful.

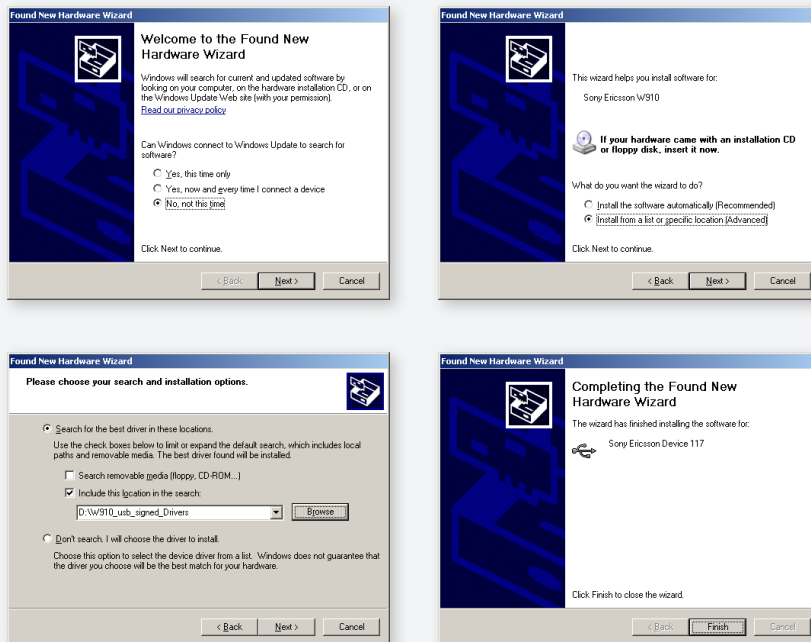
Appendix: Installing drivers in detail (for Windows XP)



1. Installing USB Flash drivers (common for all Sony Ericsson phones)

- Take any Sony Ericsson phone
- Power it off
- Remove the battery and install it back
- Keep holding 'C' button and connect the usb cable during that
- When system asks for New hardware installation, choose:
 - "No, not this time" when asking for using Windows Update
 - then choose "Install from a list or specific location (Advanced)"
 - click "Browse" and look for drivers in the path: C:\Program Files\D-Unlocker\Drivers\USB Flash vX.X.X.X
 - * in case you installed the application elsewhere, replace "C:\Program Files\D-Unlocker" by your install path
 - click "Next" and then "Finish"
- The phone may power on itself after a minute, so when driver installation is finished, disconnect the phone and remove/install its battery





2. Installing phone modem drivers (phone type specific)

- Download and unpack the appropriate phone modem drivers from the support area (for each phone type separately)
- Turn a phone on, wait until it starts
- connect a DCU-60 cable to the phone
- When system asks for New hardware installation, choose:
 - **"No, not this time"** when asking for using Windows Update
 - then choose **"Install from a list or specific location (Advanced)"**
 - click **"Browse"** and look for drivers in the path where you have extracted the drivers
 - click **"Next"** and then **"Finish"**
- There are more components, so the system will ask more times. Just repeat the procedure described above

